

# ELECTRIC MOTORS



HP	Image #	RPM	Shaft	*Type	Frame	Max. AMPS	Voltage	Ph	Protection	HZ	Each	
F02-00035	1/3	1	1725	1/2	ODP/ NB	48	7.0	115	1	Auto	60	163.50
F02-00042	3/4	12	1725	5/8	ODP	56	11/5.5	115/230	1	Auto	60	328.60
F02-00129	1.5	15	3450	5/8	ODPC	56	13/6.5	115/230	1	Manual	60	383.60
F02-00052	2	2	1725	5/8	ODP	56H	7.0/6.4/3.2	208/230/460	3	No	60	565.50
F02-00099	2	10	2850	5/8	ODPC	56C	17.6/8.8	115/230	1	Manual	50	500.80
F02-00138-U	2.3	9	3450	5/8	ODP	56	18.4/10.6/9.2	115/208/230	1	Manual	60	393.10
F02-00138-UC	2.3	19	3450	5/8	ODPC	56	17.2/8.6	115/230	1	Manual	60	413.60
F02-00056	3	3	1725	1 1/8	ODP	182T	9.5/8.6/4.3	208/230/460	3	No	60	609.90
F02-00087-U	4	14	3450	5/8	ODP	56	17.8/16.6	208/230	1	Manual	60	578.70
F02-00094	4	2	3450	5/8	ODP	56	12/11/5.5	208/230/460	3	Manual	60	473.40
F02-00098-UC	4	20	3450	5/8	ODPC	W56	17.8/16.6	208/230	1	Manual	60	607.60
F02-00062	5	4	1725	1 1/8	ODP	184T	25/23	208/230	1	Manual	60	788.80
F02-00088-U	5	13	3450	7/8	ODP	56	22/21	208/230	1	Manual	60	612.50
F02-00106	5	18	3450	7/8	ODP	Y145T	13.4/13.2/6.6	208/230/460	3	Manual	60	591.80
F02-00089	6	4	3450	1 1/8	ODP	184T	28/24.5	208/230	1	Manual	60	782.70
F02-00095	6	3	3450	1 1/8	ODP	184T	15.3/14.6/7.3	208/230/460	3	Manual	60	614.00
F02-00103	6	4	2850	1 1/8	ODP	184T	27/24	115/230	1	Manual	50	867.00
F02-00064	7.5	3	1725	1 3/8	ODP	213T	24/22/11	208/230/460	3	No	60	702.00
F02-00065-1	7.5	11	1725	1 1/8	TEFCC	215	31	230	1	No	60	2,059.20
F02-00069	8	17	3450	1 1/8	ODP	184T	36.5/35	208/230	1	Manual	60	891.00
F02-00112	8	16	3490	1 1/8	ODP	184T	19.5/9.75	230/460	3	Manual	60	1,384.90
F02-00070	10	3	1725	1 3/8	ODP	215T	30/28/14	208/230/460	3	No	60	836.90
F02-00071	10	5	1725	1 3/8	ODP	215T	42	230	1	No	60	2,119.70
F02-00072	10	8	1730	1 3/8	TEFC	215T	39	230	1	Manual	60	2,156.00
F02-00073	10	6	1725	1 3/8	TEFC	215T	28.6/26/13	208/230/460	3	No	60	983.90
F02-00075	15	7	1760	1 5/8	ODP	254T	40/20	230/460	3	No	60	1,376.80
F02-00076	15	7	1760	1 5/8	ODP	254T	46	200	3	No	60	1,376.80

\*ODP = Open Drip Proof, ODPC = Open Drip Proof C-Face, NB = No Base  
TEFC = Totally Enclosed Fan Cooled, TEFCC = Totally Enclosed Fan Cooled C-Face

# GAS ENGINES & FILTERS

## Briggs & Stratton Vanguard Engines



- ◆ Dura-Bore cast iron cylinder sleeve for extended life. Maintenance-free Magnetron electronic ignition for quick, dependable starts
- ◆ Dual-Clean air cleaner pleated paper filter with a foam pre-cleaner ensures maximum protection for extended engine life
- ◆ Overhead valve design (OHV) for cooler operation and longer valve life
- ◆ Super Lo-Tone Muffler Available
- ◆ Low Oil Alert Standard unless noted Opt



Engine Model	HP	Shaft Size	Starter	Oil Alert	Charge Rate	Fuel Tank	Each	
F05-00448	20H1360126E9	9	1"	Recoil	Yes	20	Yes	<b>825.50</b>
F05-00455	235432-0235-E1	11	1"	Recoil	Yes	N/A	Yes	<b>1,947.70</b>
F05-00454	245437-0284-E1	13	1"	Electric	Yes	10	Yes	<b>2,519.60</b>
F05-00439	305447-0079-E1	16	1"	Electric	Opt	16	No	<b>2,138.90</b>
F05-00498	305447-0023-E1	16	1"	Electric	Opt	16	Yes	<b>2,347.50</b>
F05-00445A	356447-0209-E1	18	1"	Electric	Opt	20	No	<b>2,340.50</b>

### Oil Filters for B & S Engines

Engine Part #	Description	Each
F05-00441-02	Long (3 3/8") Version Oil filter (To replace #491056S)	<b>19.00</b>
F05-00442-2	Short (2 1/4") Version Oil filter (To replace #492932S)	<b>21.20</b>



Long Version



Short Version

#### Filter Cross-Reference Guide Only

Engine Part #	HP	Short	Long	No Filter
F05-00448	9			√
F05-00455	11			√
F05-00454	13			√
F05-00439*	16	√	√	
F05-00498*	16	√	√	
F05-00445A	18	√		

\*Can use either short or long version filter.

### Air Filters for B & S Engines

Engine Part #	Description	Each
F05-00430-01	Air filter cartridge - Image 1 (To replace #393957S)	<b>25.90</b>
F05-00442-3	Air filter cartridge - Image 2 (To replace #394018S)	<b>14.30</b>
F05-00454-02	Air filter cartridge - Image 3 (To replace #710266)	<b>23.10</b>
F05-00430-02	Foam pre-cleaner - Image 4 (To replace #271794S)	<b>5.70</b>
F05-00442-4	Foam pre-cleaner - Image 5 (To replace #272490S)	<b>4.20</b>
F05-00454-01	Foam pre-cleaner - Image 6 (To replace #710268)	<b>12.50</b>



Image 1



Image 2



Image 3



Image 4



Image 5



Image 6

#### Filter Cross-Reference Guide Only

Engine Part #	HP	Air Filter Cartridge	Pre-Cleaner
F05-00448	9	F05-00454-02	F05-00454-01
F05-00455	11	F05-00454-02	F05-00454-01
F05-00454	13	F05-00454-02	F05-00454-01
F05-00439	16	F05-00442-3	F05-00442-4
F05-00498	16	F05-00430-01	F05-00430-02
F05-00445A	18	F05-00442-3	F05-00442-4

Note: Each engine requires a cartridge and a pre-cleaner.

# GAS ENGINES

## Honda Engines

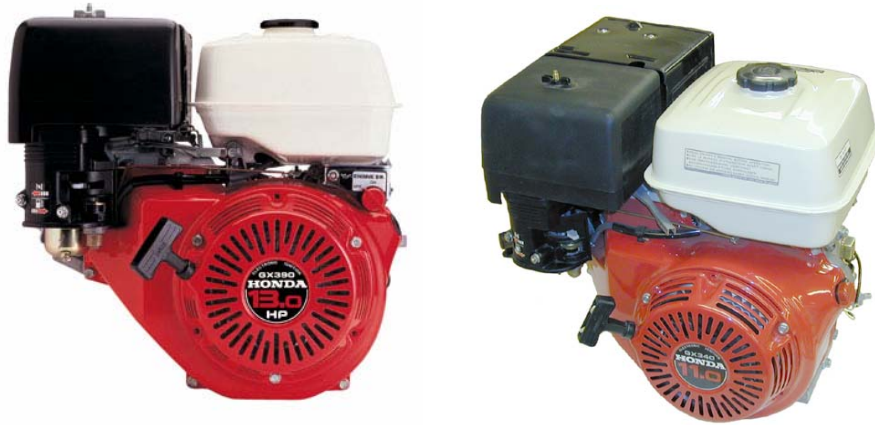


- ◆ Oil alert
- ◆ Dual air filter
- ◆ Manual throttle control or remote
- ◆ All Honda engines come with Automatic Decompression for easy starting and maintenance-free electronic ignitions

Honda has become known as the leader in creating four-stroke engines that are reliable, technologically advanced and easy to start. Overhead Valve models have a lightweight design for reduced fuel and oil consumption.

Honda engines meet current CARB and EPA standards and offer enhanced performance, all with no change to existing external dimensions. All Honda engines are produced in manufacturing facilities that are certified to ISO 9000 standards.

**HONDA HONDA HONDA HONDA HONDA HONDA HONDA**  
**ENGINES ENGINES ENGINES ENGINES ENGINES ENGINES ENGINES**



	Engine Model	HP	Shaft Size	Throttle	Oil Alert	Starter	Charge Rate	Fuel Tank	Each
F05-00461	GX160UT1QX2	5.5	3/4"	Manual/Remote	Yes	Recoil	N/A	Yes	825.60
F05-00468	GX160U1QAX2	5.5	3/4"	Manual/Remote	Yes	Recoil	7	Yes	1,065.60
F05-00499	GX270UQAR2	9	1"	Manual/Remote	Yes	Recoil	18	Yes	1,644.80
F05-00482	GX340U1QNR2	11	1"	Manual/Remote	Yes	Electric	18	Yes	2,086.40
F05-00466	GX390U1QNE2	13	1"	Manual/Remote	Yes	Electric	10	Yes	2,035.20
F05-00477	GX390UT1QAA2	13	1"	Manual/Remote	Yes	Recoil	N/A	Yes	1,500.80
F05-00488	GX390U1QNR2	13	1"	Manual/Remote	Yes	Electric	18	Yes	2,150.40
F05-00402	GX620U1QAF1	20	1"	Manual Only	No	Electric	20	No	2,972.80
F05-00467	GX620U1QXC2	20	1"	Manual Only	Yes	Electric	3	No	2,800.00
F05-00495	GX670UTAF	24	1 1/8"	Manual Only	No	Electric	20	No	3,324.80

## Honda Engine Oil Filters



		<b>Each</b>
<b>F05-00467-01</b>	Oil filter #15400-PLM-A01PE	<b>16.60</b>

### Filter Cross-Reference Guide Only

Engine Part #	HP	Oil Filter	No Filter
F05-00461	5.5		√
F05-00468	5.5		√
F05-00499	9		√
F05-00482	11		√
F05-00466	13		√
F05-00477	13		√
F05-00488	13		√
F05-00402	20	F05-00467-01	
F05-00467	20	F05-00467-01	
F05-00495	24	F05-00467-01	

Filter assembled



Filter top



Filter disassembled



## Air Filters For Honda Engines

		<b>Each</b>
<b>F05-00468-03</b>	Inner & Outer Air filter - Image 1 (To replace #17210ZE1517)	<b>23.10</b>
<b>F05-00452-01</b>	Inner & Outer Air filter - Image 1 (To replace #17210ZE2515)	<b>25.20</b>
<b>F05-00462-10</b>	Inner & Outer Air filter - Image 1 (To replace #17210ZE3505)	<b>35.70</b>
<b>F05-00467-02*</b>	Inner Air filter - Image 2 (To replace #17010ZJ1000 "Pre 06-01-00")	<b>54.60</b>
<b>F05-00467-04*</b>	Inner Air filter - Image 3 (To replace #17210ZJ1842 "Post 06-01-00")	<b>58.80</b>
<b>F05-00467-03*</b>	Outer Air filter - Image 4 (To replace #17218ZJ1000 "Pre 06-01-00")	<b>16.80</b>
<b>F05-00467-05*</b>	Outer Air filter - Image 5 (To replace #17218ZJ1840 "Post 6-01-00")	<b>12.60</b>

### Filter Cross-Reference Guide Only

Engine Part #	HP	Inner Air Filter	Outer Air Filter
F05-00461	5.5	F05-00468-03	N/A
F05-00468	5.5	F05-00468-03	N/A
F05-00499	9	F05-00452-01	N/A
F05-00482	11	F05-00462-10	N/A
F05-00466	13	F05-00462-10	N/A
F05-00477	13	F05-00462-10	N/A
F05-00488	13	F05-00462-10	N/A
F05-00402	20	F05-00467-04	F05-00467-05
F05-00467*	20	F05-00467-02 or 04	F05-00467-03 or 05
F05-00495	24	F05-00467-04	F05-00467-05



Image 1



Image 2



Image 3



Image 4



Image 5

## Kohler Command Engines

- ◆ Overhead valve design (OHV) for cooler operation and longer valve life
- ◆ Dual element air cleaner
- ◆ Hydraulic valve lifters
- ◆ Smart choke carburetor
- ◆ Dual oil drain
- ◆ Electronic ignition
- ◆ Mechanical fuel pump
- ◆ Full pressure lubrication
- ◆ Muffler is not included in the models listed below.

# KOHLER.



	Engine Model	HP	Shaft Size	Starter	Oil Alert	Charge Rate	Fuel Tank	Each
F05-00491	CH18SPA-62571	18	1 1/8"	Electric	Yes	15	N/A	2,834.50
F05-00480	CH20SPA-64503	20	1 1/8"	Electric	Yes	15	N/A	4,036.50
F05-00478	PA-CH730-0040	25	1 7/16"	Electric	Yes	15	N/A	4,014.40

## Kohler Engine Oil Filters

# KOHLER.

		Each
F05-00417-02	Oil filter #52.050.02S1 (Long Version)	13.00
F05-00478-01	Oil filter #12.050.01 (Short Version)	13.00



Long Version



Short Version

### Filter Cross-Reference Guide Only

Engine Part #	HP	Short	Long
F05-00491	18	√	√
F05-00480	20	√	√
F05-00478	25	√	√

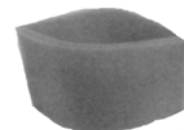
## Kohler Engine Air Filters

# KOHLER.

		Each
F05-00491-11	Air filter w/pre-cleaner #47.883.03	16.90
F05-00478-02	Air filter #24.083.03	14.80
F05-00480-03	Pre-cleaner #24.083.02	5.00
F05-00478-03	Pre-cleaner #24.083.05S	5.00



Air Filter Cartridge



Pre-Cleaner

### Filter Cross-Reference Guide Only

Engine Part #	HP	Air Filter	Pre-Cleaner
F05-00491	18	F05-00491-11*	F05-00480-03
F05-00480	20	F05-00491-11*	F05-00480-03
F05-00478	25	F05-00478-02	F05-00478-03

Note: Each engine requires an air filter and a pre-cleaner. (\*F05-00491-11 is both.)

# DIESEL ENGINE & FILTERS/ENGINE ACCESSORIES

## Lombardini Diesel Engine

- ◆ 4-Stroke Diesel
- ◆ Liquid Cooled
- ◆ Overhead Camshaft
- ◆ Indirect Fuel Injection by Unit Injectors
- ◆ Mechanical Governing
- ◆ Advanced Fuel Injection System and Combustion Chamber Design
- ◆ Pressure Lubricated
- ◆ Re-borable Cylinders
- ◆ Grindable Crankshaft
- ◆ Replaceable Valve Guides and Seats and Heavy Duty Engine Bearings
- ◆ This model comes with a radiator on front, air cleaner, muffler, shaft extension on fly wall, stub shaft, and safety shutdown system for high coolant temp. and low oil pressure.



Engine Model	HP	Shaft Size	Starter Type	Fuel Tank	Each	
F05-00396	LDW1003	26.1	1 7/16"	Electric	No	7,540.80

## Lombardini Engine Oil Filter



Engine Part #	HP	Oil Filter	Each
F05-00485-02	26.1 Gross	Oil filter #2175-107	49.10



Filter Cross-Reference Guide Only

Engine Part #	HP	Oil Filter
F05-00396	26.1 Gross	F05-00485-02



**LOMBARDINI USA Inc.**

## Lombardini Engine Air Filter



Engine Part #	HP	Air Filter	Pre-filter	Each
F05-00485-03	26.1 Gross	Air filter #2175-164	N/A	48.40



Filter Cross-Reference Guide Only

Engine Part #	HP	Air Filter	Pre-filter
F05-00396	26.1 Gross	F05-00485-03	N/A

## Engine Throttle Control



- ◆ Speedmatic throttle control for gasoline engines
- ◆ 3000 PSI max. pressure
- ◆ 725 PSI min. pressure
- ◆ 3/8" Male inlet
- ◆ 140° F
- ◆ General Pump #ZSPEED



Engine Part #	Each	
N07-ZSPEED	Throttle Control - ZSPEED	137.10

## Tiny Tach/12 Volt Hour Meter



- ◆ Attach to plug wire, Easy installation, Panel mount
- ◆ Can be used as an RPM tachometer or an hour meter.
- ◆ Hour Meter, Tachometer, Dual Flash Alerts — flashes "CHG OIL & LUBE" at 25 Hour intervals with total flash time of 2 hours.
- ◆ For most Single and Twin cylinder four-cycle gasoline engines NOT equipped with oil filter.
- ◆ Hr. Meter (9,999.9 hrs.)
- ◆ Tachometer, Max. RPM (7,000, 1 Spark = 1 RPM)
- ◆ Inductive (spark) Input, with Service (Flash) Alert



Engine Part #	Each	
Y02-00035	Tiny Tach/Hour Meter	75.10

## “AK” FHP Finished-Bore Pulleys



	<b>Browning #</b>	<b>O.D.</b>	<b>P.D.</b>	<b>Each</b>
R03-00041	AK41-1/2	3.95"	3.70"	<b>11.30</b>
R03-00049	AK49-1/2	4.75"	4.50"	<b>13.40</b>
R03-00128	AK28-5/8	2.80"	2.80"	<b>9.40</b>
R03-00130	AK30-5/8	3.05"	2.80"	<b>9.40</b>
R03-00132	AK32-5/8	3.25"	3.00"	<b>12.00</b>
R03-00139	AK39-5/8	3.75"	3.50"	<b>12.00</b>
R03-00234-1	AK34-1/2	3.45"	3.20"	<b>12.00</b>
R03-00339	AK39-7/8	3.75"	3.50"	<b>12.00</b>
R03-00441	AK41-1	3.95"	3.70"	<b>11.30</b>

## “AK” FHP H Bushing Pulleys



	<b>Browning #</b>	<b>O.D.</b>	<b>P.D.</b>	<b>Each</b>
R03-00639	AK39H	3.75"	3.50"	<b>12.00</b>
R03-00641	AK41H	3.95"	3.70"	<b>12.00</b>
R03-00644	AK44H	4.25"	4.00"	<b>14.70</b>
R03-00646-1	AK46H	4.45"	4.20"	<b>13.80</b>
R03-00649	AK49H	4.75"	4.50"	<b>15.00</b>
R03-00651	AK51H	4.95"	4.70"	<b>15.00</b>
R03-00656	AK56H	5.45"	5.20"	<b>21.90</b>
R03-00659	AK59H	5.75"	5.50"	<b>21.90</b>
R03-00661	AK61H	5.95"	5.70"	<b>21.90</b>
R03-00664	AK64H	6.25"	6.00"	<b>21.90</b>
R03-00669	AK69H	6.75"	6.50"	<b>21.90</b>
R03-00671	AK71H	6.95"	6.70"	<b>21.90</b>
R03-00674	AK74H	7.25"	7.00"	<b>21.90</b>
R03-00679	AK79H	7.75"	7.50"	<b>24.60</b>
R03-00694	AK94H	9.25"	9.00"	<b>27.30</b>

## “2AK” FHP Finished-Bore Pulleys



	<b>Browning #</b>	<b>O.D.</b>	<b>P.D.</b>	<b>Each</b>
R03-00828	2AK28-7/8	2.85"	2.60"	<b>15.20</b>
R03-00832	2AK32-1 1/8	3.25"	3.00"	<b>17.00</b>
R03-00832-1	2AK32-7/8	3.25"	3.00"	<b>17.00</b>

## “2AK” FHP H Bushing Pulleys



	<b>Browning #</b>	<b>O.D.</b>	<b>P.D.</b>	<b>Each</b>
R03-00730	2AK30H	3.05"	2.80"	<b>16.60</b>
R03-00732	2AK32H	3.25"	3.00"	<b>16.60</b>
R03-00734	2AK34H	3.45"	3.30"	<b>20.50</b>
R03-00739	2AK39H	3.75"	3.50"	<b>19.60</b>
R03-00741	2AK41H	3.95"	3.70"	<b>21.00</b>
R03-00744	2AK44H	4.25"	4.00"	<b>23.00</b>
R03-00746	2AK46H	4.45"	4.20"	<b>23.30</b>
R03-00749	2AK49H	4.75"	4.50"	<b>23.30</b>
R03-00754	2AK54H	5.25"	5.00"	<b>26.00</b>
R03-00756	2AK56H	5.45"	5.20"	<b>26.00</b>
R03-00759	2AK59H	5.75"	5.50"	<b>27.30</b>
R03-00764	2AK64H	6.25"	6.00"	<b>29.70</b>
R03-00774	2AK74H	7.25"	7.00"	<b>32.90</b>
R03-00784	2AK84H	8.25"	8.00"	<b>40.20</b>
R03-00794	2AK94H	9.25"	9.00"	<b>46.40</b>
R03-07104	2AK104H	10.25"	10.00"	<b>50.40</b>

# PULLEYS

## “BK” FHP Finished-Bore Pulley



	Browning #	O.D.	P.D.	Each
R03-00332-B	BK32-7/8	3.35"	3.00"	8.40

## “BK” FHP H Bushing Pulley



	Browning #	O.D.	P.D.	Each
R03-00690	BK90H	8.75"	8.40"	31.50

## “2BK” FHP Finished-Bore Pulley



	Browning #	O.D.	P.D.	Each
R03-00830	2BK30-1 1/8	3.15"	2.80"	19.70

## “2BK” FHP H Bushing Pulleys



	Browning #	O.D.	P.D.	Each
R03-00745	2BK45H	4.25"	3.90"	25.00
R03-00747	2BK47H	4.45"	4.10"	25.00
R03-00757	2BK57H	5.45"	5.10"	28.90
R03-00780	2BK80H	7.75"	7.40"	47.00
R03-07120	2BK120H	11.75"	11.40"	89.80
R03-75100	2BK100H	9.75"	9.40"	60.00
R03-75110	2BK110H	10.75"	10.40"	62.70

## “3H” 3V H Bushing Pulley



	Browning #	O.D.	P.D.	Each
R03-00933	3H3V33	3.35"	3.30"	36.80

## “3P” 3V P Bushing Pulleys



	<b>Browning #</b>	<b>O.D.</b>	<b>P.D.</b>	<b>Each</b>
R03-00950	3P3V50	5.00"	4.95"	<b>64.90</b>
R03-00953	3P3V53	5.30"	5.25"	<b>78.50</b>

## “3Q” 3V Q Bushing Pulleys



	<b>Browning #</b>	<b>O.D.</b>	<b>P.D.</b>	<b>Each</b>
R03-00980	3Q3V80	8.00"	7.95"	<b>107.80</b>
R03-09106	3Q3V106	10.60"	10.55"	<b>291.00</b>
R03-09140	3Q3V140	14.00"	13.95"	<b>419.40</b>

## “H” Split-Taper Bushings



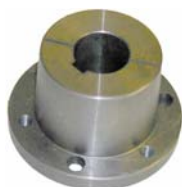
	<b>Shaft Size</b>	<b>Each</b>
R04-00001	24MM	<b>16.10</b>
R04-00002	5/8"	<b>16.10</b>
R04-00003	3/4"	<b>16.10</b>
R04-00004	7/8"	<b>16.10</b>
R04-00006	1"	<b>16.10</b>
R04-00006-1	1 3/8", 5/16 Keyway	<b>16.10</b>
R04-00007-H	1 1/8"	<b>16.10</b>
R04-00008-H	1 7/16"	<b>16.10</b>
R04-00135	35MM	<b>16.10</b>

## “P” Split-Taper Bushings



	<b>Shaft Size</b>	<b>Each</b>
R04-00010	1 5/8"	<b>28.20</b>
R04-00012	1 7/16"	<b>28.20</b>

## “Q” Split-Taper Bushings



	<b>Shaft Size</b>	<b>Each</b>
R04-00332	Q1 x 32MM	<b>55.40</b>
R04-00335	Q1 x 35MM	<b>55.40</b>

# BELTS

## “A” V-Belts



	Belt Size	Each
R02-00424-II	A24	7.40
R02-00427-II	A27	7.80
R02-00428-II	A28	7.90
R02-00429	AP29	7.40
R02-00429-II	A29	8.00
R02-00430-II	A30	8.10
R02-00431-II	A31	8.30
R02-00432	AP32	7.70
R02-00433-II	A33	8.50
R02-00439	AP39	8.80
R02-00440	AP40	8.90
R02-00444	AP44	9.50
R02-00445-II	A45	10.50
R02-00455-II	A55	11.70

## “AX” Raw Edge Belts



	Belt Size	Each
R02-00231	AX31	10.10
R02-00232	AX32	10.30
R02-00233	AX33	10.40
R02-00234	AX34	10.70
R02-00235	AX35	10.80
R02-00236	AX36	11.00
R02-00237	AX37	11.50
R02-00238	AX38	11.50
R02-00239	AX39	11.70
R02-00242	AX42	12.40
R02-00243	AX43	12.60
R02-00246	AX46	13.00
R02-00247	AX47	13.10
R02-00248	AX48	13.20

## “B” V-Belts



	Belt Size	Each
R02-00132	BP32	10.20
R02-00133	B33	10.30
R02-00156	BP56	15.80
R02-00169	BP69	18.00

## “BX” Raw Edge Belts



	Belt Size	Each
R02-00734	BX34	14.10
R02-00735	BX35	14.40
R02-00745	BX45	18.30
R02-00746	BX46	18.70
R02-00748	BX48	19.20
R02-00749	BX49	19.50

## Fractional V-Belt



	Belt Size	Each
R02-00044	4L440	12.70

## “3V” Banded Belt



	Belt Size	Each
R02-00360	3R3VX600	76.20